

Welcome to the Your Class Name Back to School Night! September 14, 2023



Ice Breaker

Introductions

Can you guess...

Try to think of an activity for the developmental domains.

Communication

Classroom Phone:

Frogs 1A: (202) 313-8294

Frogs 1B: (202) 313-8290

Email Contacts:

Text is strongly preferred as we are always on the go with our friends! You may call for more personal or urgent matters.

Email responses will be submitted after 12:30P or 4PM Mon-Fri. Please send emails to the class (frogs1@saecc.org).

HiMama

Expect 3 pictures minimum from us daily!

- All information is sent out no later than 6pm daily.
- Teachers are able to send and receive messages as a form of communication.
- Please report any issues with HiMama to us immediately.

Parent Involvement

Monthly Newsletter

Our monthly newsletter will be emailed at the beginning of each month. It will cover the theme and a few activities we have planned. You will also find parent involvement events, special announcements, closing dates, events, birthdays, and greetings to our new Friends!

Field Trips

- Chaperones are required.
- All students not going on the field trip should stay home until the class returns.

Daily Schedule

Copies of daily schedule will be provided for you all to review. We follow this schedule daily; however, we are flexible depending on the weather, events, and interests of our friends!

Friendly Reminders:

Consistency and routine are key! Please try to bring your children in at or before 9:00am. Breakfast will end at 9:30am. This will ensure they begin their day with circle time. Circle time sets the tone for the day!

Health & Safety

Handwashing

All children must wash their hands when entering the classroom.

Illnesses

Please refer to News4's weekly newsletters for details on SAECCE Illness Policy.

Medication

If your child needs medication, you must provide parental consent for O-T-C & doctors instructions for prescribed medicines, and the OSSE form signed by the doctor. Certain health conditions may require an action plan.

Enrichment

- Spanish
- Movement

Classroom Rules

- **Parents are not allowed in the classrooms.**
- Children should be at school by 9:00am.
- Pick up by the allotted time (7-5 or 8-6)
- Reach out to teacher and administration for any accommodations to the time slot.
- Please label everything you bring in for school with child's first and last name. Cups (with lids/tops) must be labeled with name, date and contents and place in a Ziploc bag.

Curriculum

Creative Curriculum

What is the creative curriculum?

The Creative Curriculum includes developmentally appropriate goals and objectives for children within four main categories of interest: social/emotional, physical, cognitive and language. The social/emotional stage helps promote independence, self-confidence and self-control.

Closing

Q&A Forum

Great opportunity for any questions, concerns, or suggestions to be discussed!

**Thank you for
joining us this
evening!**

Teacher Info

Ms. Tracie



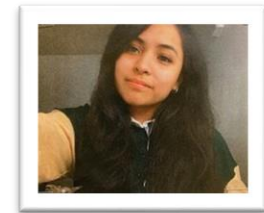
Ms. Tracie has over 40 years of teaching experience.

Ms. Alicia



Ms. Alicia has 6 years of teaching experience.

Ms. Diana



Ms. Diana has 5 years of teaching experience.